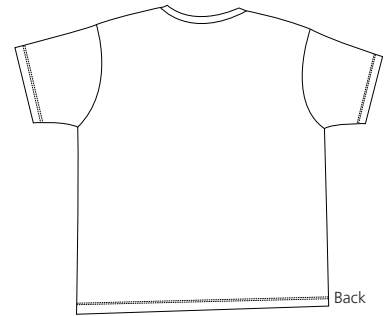
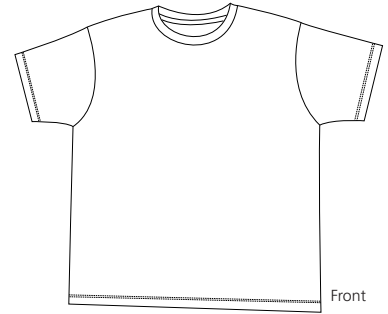


Mens Perfect Weight District Tee



DT104

- * 4.3-ounce * 100% ring spun combed cotton * 40-singles * Preshrunk * Colorfast
- * Slightly more fitted silhouette

Care Instructions:
Machine wash cold, wash inside out, wash with like colors. Do not bleach. Tumble dry low. Warm iron if necessary.

Finished Measurements in Inches

| Size | XS | S | M | L | XL | 2XL | 3XL | 4XL |
|-------------|-----|------|-----|------|------|------|------|------|
| Chest | 18 | 19.5 | 21 | 21.5 | 24 | 25.5 | 27 | 28.5 |
| Body Length | 26 | 27.5 | 29 | 30.5 | 32 | 33.5 | 34.5 | 35.5 |
| Sleeve | 8 | 8.25 | 8.5 | 8.75 | 9 | 9.25 | 9.5 | 9.75 |
| Neck Width | 6.5 | 7 | 7.5 | 7.5 | 7.75 | 7.75 | 8 | 8 |

Chest measured 1" under arm hole. Body measured from high point shoulder seam to hem. Sleeve length measured from shoulder seam to hem. Neck width measured from seam to seam.

Colors

| | |
|--|--------------------|
| | Bright White |
| | Charcoal |
| | Classic Red |
| | Clean Denim |
| | Espresso |
| | Fresh Fatigue |
| | Heathered Deep Red |
| | Jet Black |
| | Maritime Blue |
| | Navy |
| | Thyme |

Please Note:

Colors shown are approximate and for reference only. For closest match see PMS colors, or for exact match, returnable samples and grommited samples are available.

Color Chart

| Colors | Bright White | Charcoal | Classic Red | Clean Denim | Espresso | | |
|-------------|---------------|--------------------|---------------|---------------|-----------|----------|--|
| Textile PMS | 11-0601TC | No Match | 19-1664TC | No Match | 19-1314TC | | |
| General PMS | No Match | No Match | 186C | No Match | 4975C | | |
| Colors | Fresh Fatigue | Heathered Deep Red | Jet Black | Maritime Blue | Deep Navy | Thyme | |
| Textile PMS | 17-0210TC | No Match | 19-4203TC | 19-4203TC | 19-4010TC | No Match | |
| General PMS | No Match | No Match | Process Black | No Match | 532C | No Match | |